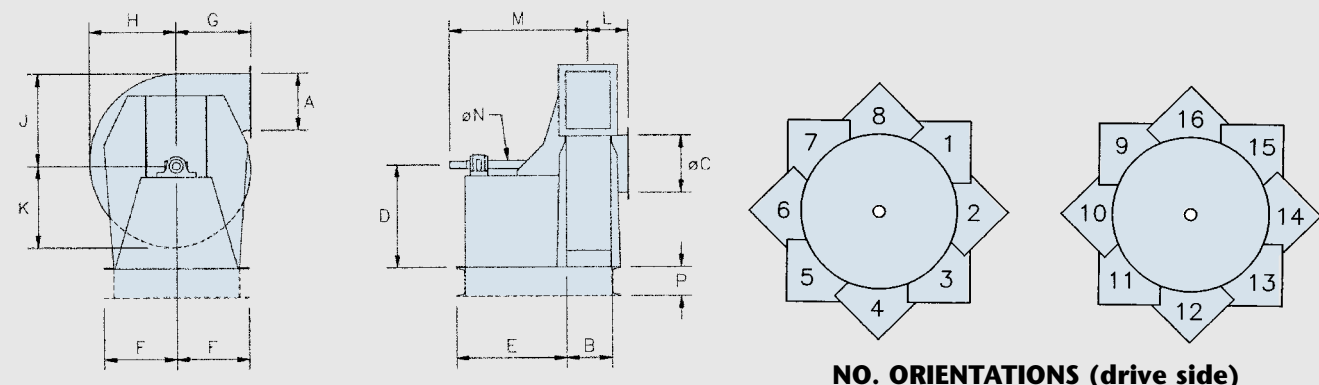
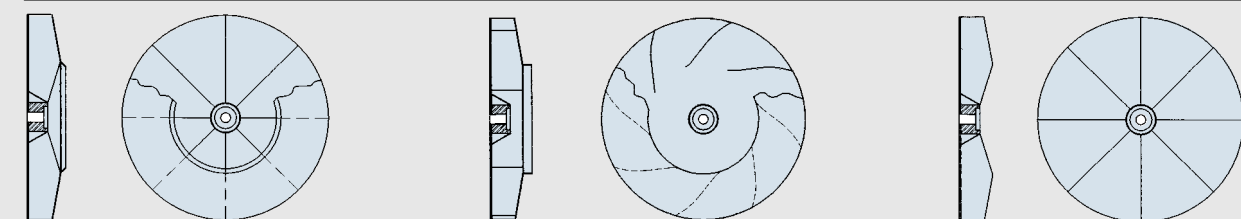


**CENTRIFUGAL FANS - RCMB - RMB - MB SERIES**



**NO. ORIENTATIONS (drive side)**

MODEL	A	B	C	D (according to orientation)					E	F	G	H	J	K	L	M	N (inches)	P
				3-11 4-12	2-10	8-16 1-9	7-15	5-13 6-14										
8	185	130	200	360	360	360	360	360	450	150	225	254	292	228	120	474	1-3/16	101
11	260	180	280	440	440	440	440	440	525	182	275	345	397	309	162	559	1-7/16	101
13	305	210	325	515	515	515	515	515	625	220	325	406	468	363	183	667	1-7/16	101
15	350	245	375	625	625	625	625	625	703	325	400	467	538	417	210	743	1-11/16	152
18	420	290	450	700	700	700	700	700	725	325	450	561	646	501	248	805	1-3/4	152
20	470	325	500	860	860	860	860	860	867	385	500	621	720	555	270	933	2	152
22	515	360	550	860	860	860	860	860	885	385	550	682	792	610	291	950	2	152
24	560	390	600	930	930	930	930	930	980	465	600	785	860	707	314	1035	2-1/4	152
26	610	420	650	1075	1075	1075	1075	1075	995	465	650	845	935	759	337	1050	2-11/16	152
28	655	455	700	1075	1075	1075	1075	1075	1012	465	700	907	1008	815	358	1071	2-11/16	152
30	700	490	750	1225	1045	1045	1045	1225	1125	727	750	966	1076	867	377	1216	2-15/16	203
32	750	520	800	1225	1045	1045	1045	1225	1140	767	800	1029	1151	924	405	1227	2-5/16	203
36	840	585	900	1380	1175	1175	1175	1380	1242	850	900	1152	1292	1033	450	1335	3-3/16	203
40	940	650	1000	1530	1300	1300	1300	1530	1375	930	1000	1272	1440	1140	495	1502	3-15/16	203
42	980	690	1050	1650	1300	1420	1420	1650	1230	980	1050	1339	1510	1198	525	1722	3-15/16	203
44	1030	720	1100	1650	1300	1420	1420	1650	1250	980	1100	1395	1582	121	550	1738	3-15/16	203
46	1080	750	1150	1800	1350	1500	1500	1800	1380	1075	1150	1454	1655	1308	565	1920	4-1/2	203
48	1125	780	1200	1900	1450	1600	1600	1900	1500	1150	1200	1517	1727	1355	585	2055	4-15/16	203
50	1170	815	1250	1900	1450	1600	1600	1900	1500	1150	1300	1580	1795	1415	610	2075	4-15/16	203



**RCMB SERIES**

- **Application:** Accepts all non-fibrous dry or damp particles.
- **Capacity:** Up to 30 m³/sec. (65000 CFM)
- **Operating pressure:** Up to 600 mm WC
- **Efficiency:** 71 %

**MB SERIES**

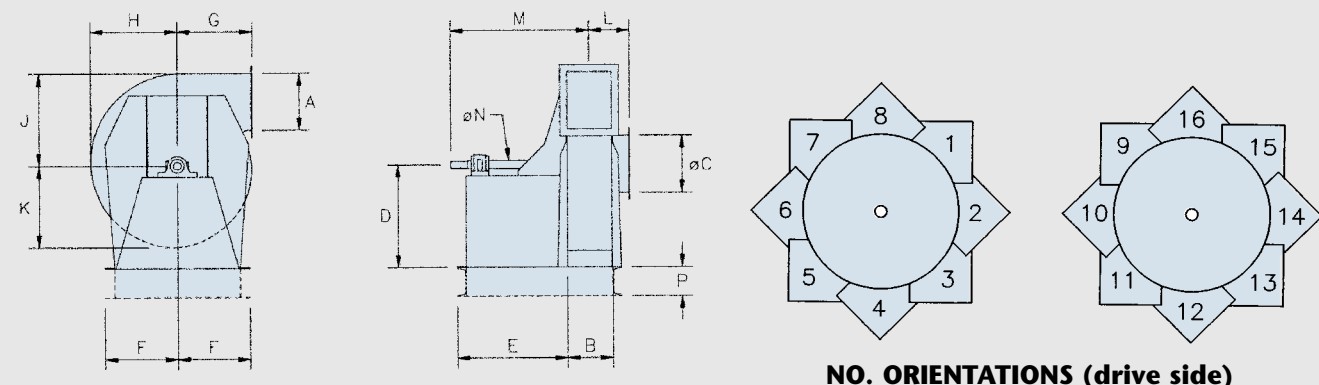
- **Application:** Clean air, but may accept a small load of dry, non-plugging particles.
- **Capacity:** Up to 40 m³/sec. (85000 CFM)
- **Operating pressure:** Up to 700 mm WC
- **Efficiency:** 83 %

**RMB SERIES**

- **Application:** Accepts all dry, damp and fibrous particles.
- **Capacity:** Up to 30 m³/sec. (65000 CFM)
- **Operating pressure:** Up to 500 mm WC
- **Efficiency:** 60 %

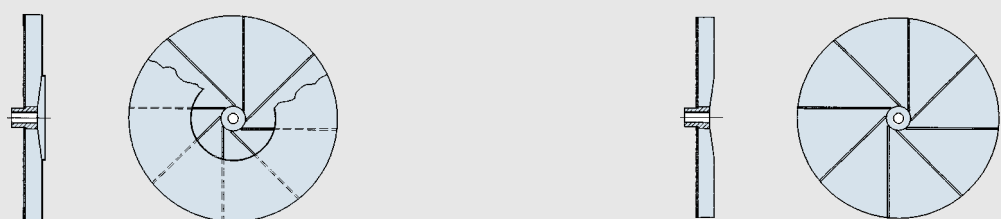
\* The characteristics and the dimensions are subject to change without prior notice.

**CENTRIFUGAL FANS - RCHA - RHA SERIES**



**NO. ORIENTATIONS (drive side)**

MODEL	A	B	C	D (according to orientation)					E	F	G	H	J	K	L	M	N (inches)	P
				3-11 4-12	2-10	8-16 1-9	7-15	5-13 6-14										
41	185	103	180	370	370	370	370	370	350	265	246	288	310	269	115	461	1-11/16	101
45	205	113	200	370	370	370	370	370	350	296	270	315	338	294	125	466	1-11/16	101
50	225	125	220	450	450	450	450	450	400	348	300	349	375	325	139	534	1-11/16	101
55	250	138	240	450	450	450	450	450	400	354	330	383	411	357	145	541	1-11/16	101
60	270	150	260	540	540	540	540	540	470	392	360	417	447	389	155	637	1-11/16	101
66	300	165	300	540	540	540	540	540	470	400	396	457	491	426	170	644	1-11/16	101
73	330	183	325	700	700	700	700	700	421	409	438	507	541	473	194	607	1-3/4	152
80	360	200	350	860	860	860	860	860	456	486	480	555	593	518	206	681	2-1/8	152
88	400	220	375	860	860	860	860	860	456	495	528	610	651	568	220	691	2-3/16	152
97	440	243	400	930	930	930	930	930	515	547	582	673	716	627	242	762	2-7/16	152
106	480	265	450	1075	1075	1075	1075	1075	515	558	636	734	782	684	263	773	2-7/16	152
117	530	293	500	1225	1045	1045	1045	1225	570	622	702	808	861	753	276	873	2-15/16	203
129	580	323	550	1225	1045	1045	1045	1225	570	636	774	890	949	829	311	888	2-15/16	203
142	640	355	600	1380	1175	1175	1175	1380	642	688	852	1017	1044	950	328	976	3-3/16	203
156	705	399	650	1530	1300	1300	1300	1530	698	764	921	1112	1112	986	350	1085	3-15/16	203
171	770	428	750	1650	1300	1300	1300	1650	698	850	1026	1213	1244	1133	364	1104	3-15/16	203
188	845	470	800	1650	1300	1300	1300	1650	775	930	1128	1329	1367	1241	385	1203	4-3/16	203
208	935	520	900	1800	1350	1350	1350	1800	775	980	1248	1464	1512	1367	410	1228	4-3/16	203



**RCHA SERIES**

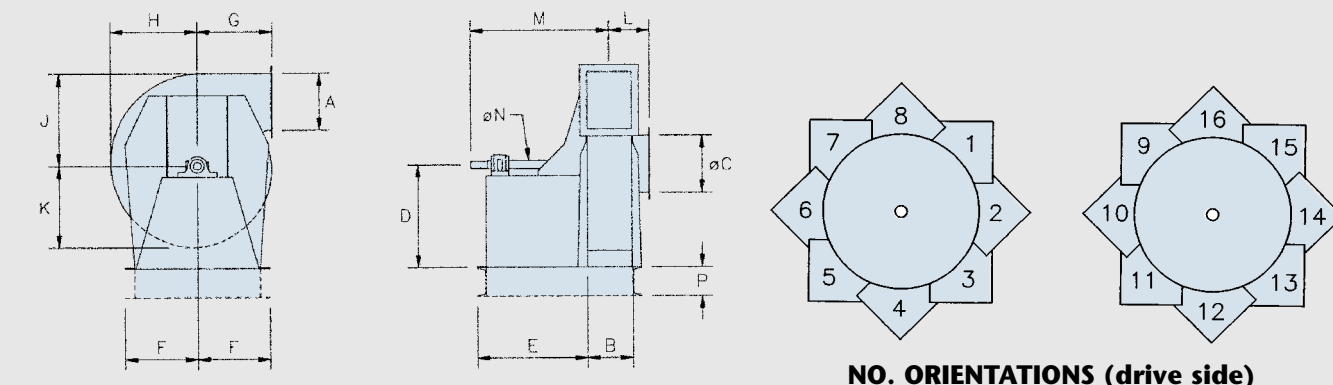
- **Application:** Accepts all non-fibrous dry and damp particles.
- **Capacity:** Up to 20 m³/sec. (43000 CFM)
- **Operating pressure:** Up to 1200 mm WC
- **Efficiency:** 71 %

**RHA SERIES**

- **Application:** Accepts all dry, damp and fibrous particles.
- **Capacity:** Up to 16 m³/sec. (34000 CFM)
- **Operating pressure:** Up to 700 mm WC
- **Efficiency:** 56 %

\* The characteristics and the dimensions are subject to change without prior notice.

**CENTRIFUGAL FANS - MS10P SERIES**



**NO. ORIENTATIONS (drive side)**

MODEL	A	B	C	D	E	F	G	H	J	K	L	M	N (inches)	P
10	276	206	260	584	645	348	343	369	413	330	205	782	1-7/16	102
12	343	245	300	658	725	348	440	457	508	406	237	906	1-11/16	102
15	387	305	375	762	750	383	502	518	578	460	305	953	1-15/16	152
17	432	345	425	766	769	450	483	578	645	514	325	1010	2-3/16	152
19	478	384	500	800	812	363	508	635	711	568	344	1093	2-7/16	152
21	526	427	550	915	852	485	628	695	778	619	418	1188	2-7/16	152
23	594	467	600	1018	903	560	745	797	889	711	438	1245	2-15/16	152
26	686	530	650	1143	958	573	762	915	1022	816	469	1357	2-15/16	152
30	775	610	750	1270	1034	638	873	1035	1156	921	509	1433	3-1/4	203
34	876	689	850	1524	1135	702	991	1194	1334	1067	549	1614	3-15/16	203

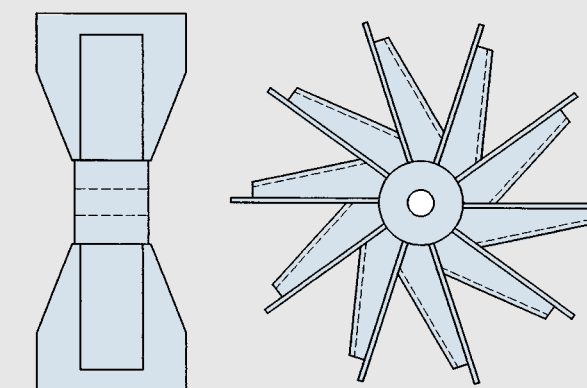
➤ MS10P series fans are specially designed to operate under extremely severe conditions.

➤ The heavy-duty open radial wheel can handle high concentrations of dry, damp and even fibrous particles.

➤ **Capacity:** Up to 22 m³/sec. (47000 CFM)

➤ **Operating pressure:** Up to 500 mm WC

➤ **Efficiency:** 68 %



\* The characteristics and the dimensions are subject to change without prior notice.

PRINTED IN CANADA



**RODAIR**  
DIV. OF RODRIGUE METAL LTD.

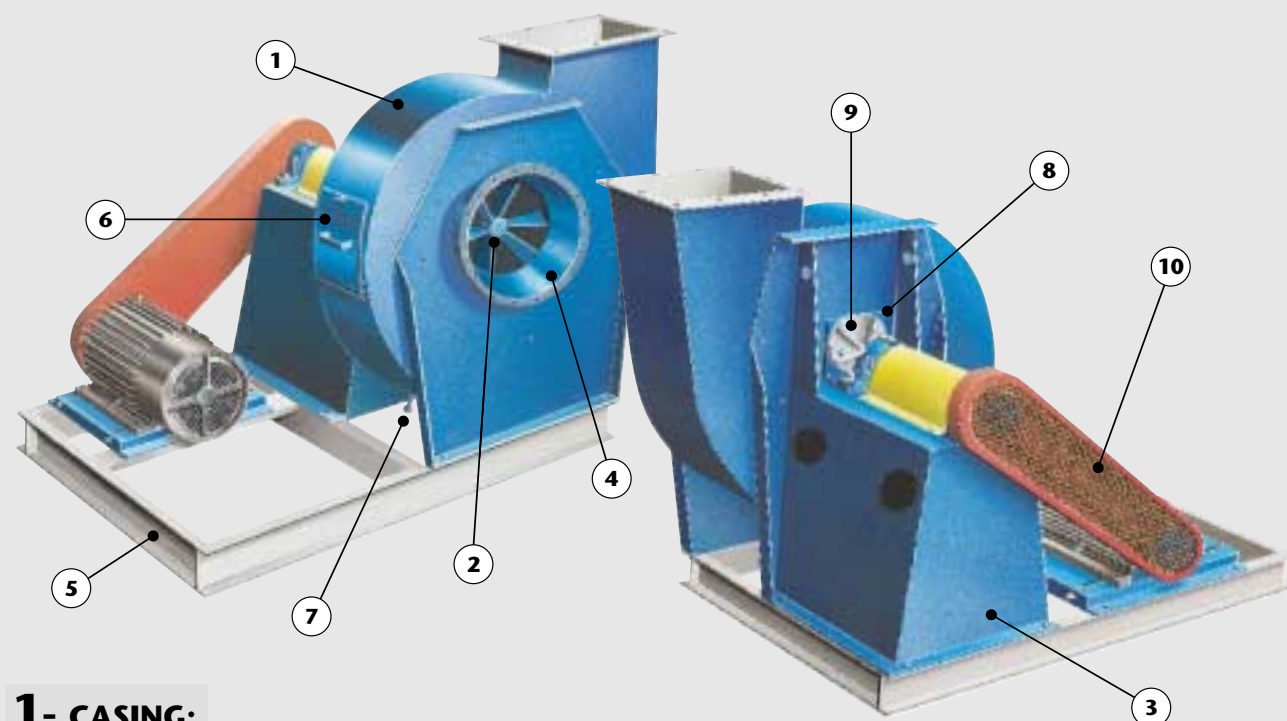
1890, 1<sup>me</sup> Rue,  
Saint-Romuald  
(Québec) Canada  
G6W 5M6  
E-mail : rodair@rodriguelmetal.com  
Internet : www.rodriguelmetal.com

Tél.: (418) 839-0400  
Fax: (418) 839-0201

**DISTRIBUTED BY**

\*This pamphlet may not be reproduced without the written authorization of Rodrigue Métal Ltd.

## INDUSTRIAL CENTRIFUGAL FAN



### 1- CASING:

Standard all-welded steel design. It is multidirectional and has stiffeners to prevent vibration or pulsation.

#### AVAILABLE OPTIONS:

- ▶ Wear-resistant welded steel perimeter for handling abrasive particles
- ▶ Removable wear-resistant steel perimeter.
- ▶ Split housing for convenient wheel removal
- ▶ Made of aluminium, stainless or others materials.

### 2- WHEEL:

Standard all-welded steel design. Several models can be adapted to the required application. Each wheel is statically and dynamically balanced.

#### AVAILABLE OPTIONS:

- ▶ Extra-heavy-duty wear-resistant welded steel design for handling abrasive particles.
- ▶ Made of aluminium, stainless or others materials.

#### AVAILABLE TYPES:

- ▶ RCMB, RMB, MB, RCHA, RHA, MS10P

### 3- BASE:

Support for bearings or motor, made of all-welded steel with stiffeners to prevent vibration.

### 4- INLET BELL:

Bell-shaped steel design to provide rational air flow to the wheel and high acoustic qualities for the fan

### 5- MOTOR SUB-BASE :

Structurale base for joining the motor to the fan in an integrated assembly.

#### AVAILABLE OPTIONS:

Springs or rubber insulators

### 6- INSPECTION DOOR:

Installed on the casing perimeter to allow visual inspection of the turbine.

### 7- DRAIN:

Mechanical tube welded to the bottom of the casing for draining liquids from the casing.

### 8- SHAFT SEALER:

Sealing device (rubber, asbestos or other) secured around the shaft and bolted to the casing to prevent dust leaks when the shaft passes through the casing.

### 9- COOLING WHEEL:

Used when the operating temperature is above 200° F. It is installed on the shaft, between the casing and the bearing, to eliminate the heat which is transmitted by the wheel to the shaft and bearings.

### 10- SAFETY GUARDS:

- ▶ Pulleys and belts
- ▶ Shaft
- ▶ Cooling wheel
- ▶ Heavy-duty steel design with screening to allow visual inspection of elements and ensure adequate protection.



RD-0



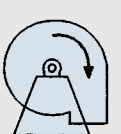
RD-45



RD-90



RD-135



RD-180



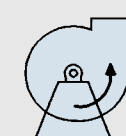
RD-225



RD-270



RD-315



LG-0



LG-45



LG-90



LG-135



LG-180



LG-225



LG-270



LG-315

**ORIENTATIONS (viewed from drive side)**



**INDUSTRIAL FAN**  
CENTRIFUGAL